

READY

BLUSKY
Simple yet effective

Meter Reading Software

Most Practical and Economical Solution for Meter Data and Load Profile Reading

Modules

READY software designed in a modular format as ribbon pages that have several advantages such as:

- Enabling to extend the software with different modules
- Upgrading to extra modules at any time
- Using the system with dedicated modules thus avoiding extra costs for extra modules

Each module has its own functionality and you may have one or more modules in your application depending on your license restrictions.

READY is the simple yet effective software, which is dedicated to read, store, and analyze the data of electronic electricity meters that communicates in IEC62056-21 (formerly known as IEC 1107) standard. It is designed by our company's software team to be used with BLUSKY optical probes and industrial communication devices.

The software supports current operating systems like Win7, Win Vista etc. and it comes in English and Turkish Language options. It is also possible to easily implement different language option to the system according to the user needs.

READY software is designed in modular format and available modules are:

- Serial Communication Module
- Ethernet Communication Module
- GPRS Communication Module
- Load Profile Module
- Settings Module

Serial, ETH and GPRS Communication Modules

READY software lets you to read the displayed values on LCD in all type of electricity meters independent from brand and type that communicates in IEC62056-21 (formerly known as IEC1107) protocol. To read your meter via:

- Optical probe
- RS232 port
- RS485 port

With a direct communication cable and/or a communication device, Serial Communication Module should be used. To read your meter via:

- RS/ETH Serial Device Server
- RS/Fiber Optic Serial Device Server etc.

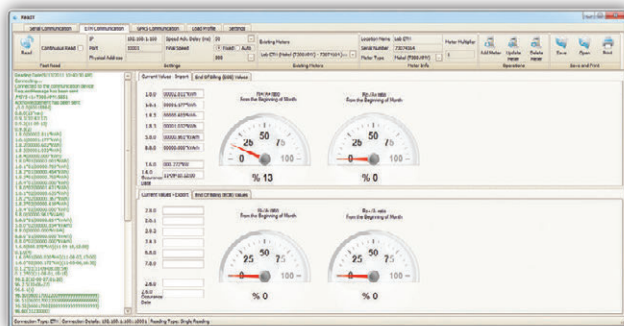
Over TCP/IP network, ETH Communication Module should be used. To read your meter via:

- GPRS/EDGE/3G Modem

Over TCP/IP network, GPRS Communication Module should be used.

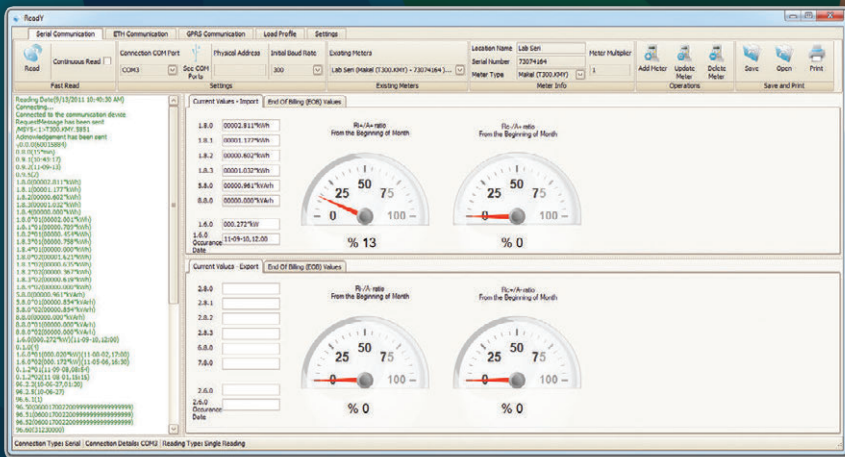
Parameters for communicating in Serial Communication like COM port, initial Baud rate; in ETH and GPRS Communication like IP address, listening TCP Port, Final Baud Rate can be entered to the system to start reading the meter. In addition to that, entered parameters can be stored in the system along with data like meter location name, serial number for using the same parameters faster in the future.

All read out data can be shown in graphical interface and can be saved as text files for re-analyzing in the future. The data also can be printed in special formats or can be saved as PDF.



The screenshot shows the 'Load Profile Analysis' window in the READY software. It displays a table with the following columns: Meter Date Time, Reading Date Time, ActiveEnergyIndex, CapacitiveEnergyIndex, InductiveEnergyIndex, ActiveEnergy, CapacitiveEnergy, InductiveEnergy. The table contains multiple rows of data for different dates and times.

Meter Date Time	Reading Date Time	ActiveEnergyIndex	CapacitiveEnergyIndex	InductiveEnergyIndex	ActiveEnergy	CapacitiveEnergy	InductiveEnergy
9/10/2011 10:31 AM	9/10/2011 10:31 AM	2.811	0	0.891	0.116	0	0.009
9/10/2011 12:00 PM	9/10/2011 10:31 AM	2.893	0	0.893	0.069	0	0.009
9/10/2011 11:53 AM	9/10/2011 10:31 AM	2.925	0	0.894	0.064	0	0
9/10/2011 11:30 AM	9/10/2011 10:31 AM	2.911	0	0.894	0.017	0	0
9/10/2011 11:00 AM	9/10/2011 10:31 AM	2.894	0	0.894	0.017	0	0
9/10/2011 10:30 AM	9/10/2011 10:31 AM	2.877	0	0.894	0.017	0	0
9/10/2011 10:00 AM	9/10/2011 10:31 AM	2.86	0	0.894	0.017	0	0
9/10/2011 9:30 AM	9/10/2011 10:31 AM	2.843	0	0.894	0.017	0	0
9/10/2011 9:00 AM	9/10/2011 10:31 AM	2.826	0	0.894	0.017	0	0
9/10/2011 8:30 AM	9/10/2011 10:31 AM	2.809	0	0.894	0.016	0	0
9/10/2011 8:00 AM	9/10/2011 10:31 AM	2.481	0	0.894	0.017	0	0
9/10/2011 7:30 AM	9/10/2011 10:31 AM	2.474	0	0.894	0.017	0	0
9/10/2011 7:00 AM	9/10/2011 10:31 AM	2.457	0	0.894	0.017	0	0
9/10/2011 6:30 AM	9/10/2011 10:31 AM	2.44	0	0.894	0.017	0	0
9/10/2011 6:00 AM	9/10/2011 10:31 AM	2.423	0	0.894	0.017	0	0
9/10/2011 5:30 AM	9/10/2011 10:31 AM	2.406	0	0.894	0.017	0	0



Load Profile Module

READY Software can read load profile values of BLUSKY, Köhler and Makel meters using communication structures of Serial, ETH and GPRS Communication modules. The profile values are stored in the system and can be analyzed according to the user needs in hourly or detailed format. Also the reports can be saved as Excel files.

In order to integrate different brand of meters to the system, please contact our company.

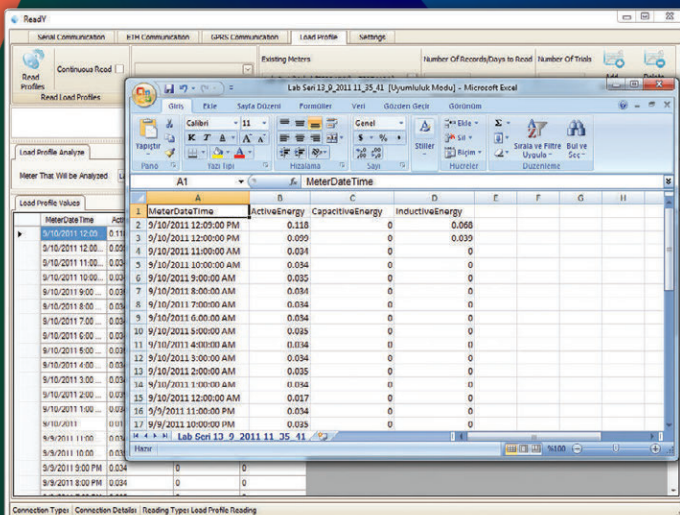
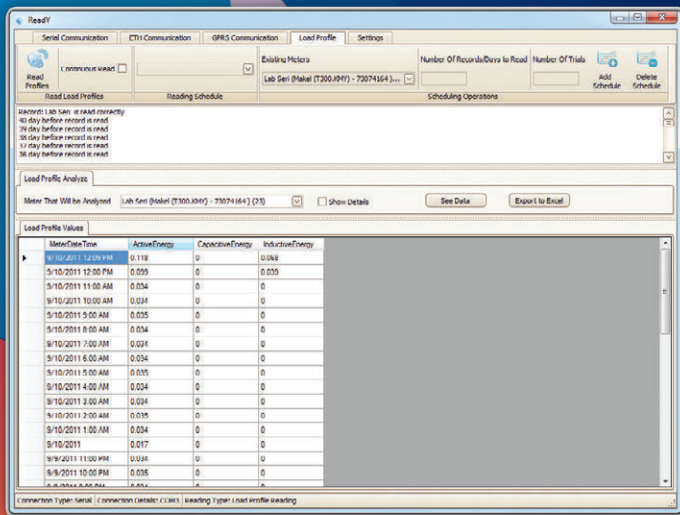
It is possible to make a list of meters that will be read and it is possible to read the load profile values of those meters continuously and automatically or single time. It is possible to analyze the data of previously read meters while reading the load profiles of another meter in the system.

Settings Module

The basic module of READY software is the Settings module. It does not depend on the license type and it comes with the software in any license type. This module enables to select the language of the system, to manage the license of the system and gives general info about the software and its vendor.

Pricing

READY software comes free of charge for users who purchased BLUSKY communication devices. The modules and number of meters that could be saved in the system may vary according to the product that the customer purchased. Please contact our company for more information.



Aktifenerji
www.aktifenerji.com.tr

Aktif Enerji Insaat Sanayi ve Ticaret Ltd. Co.

Address: Ehlibeyt Mah. Ceyhan Atuf Kansu Cad.
1262. Sokak No:9/14 06520 Balgat/Ankara/TURKEY

Tel: +90 312 473 1840(pbx)

Website: www.aktifenerji.com.tr

Fax: +90 312 473 1841

e-mail: aktif@aktifenerji.com.tr